



Pewabic Pottery is Dedicated to the Advancement of the Ceramic Arts

Volume 20 • Number 2 

The Museum at Pewabic Pottery

The Museum at Pewabic Pottery, has been fortunate enough to acquire this rare, early child's plate designed by Mary Chase Perry.

The ground of the plate is a vibrant yellow and the rooster motif is executed in a rich, dark green glaze. Originally this plate was likely part of a set, including a cup or a mug with a matching motif. The rooster plate has obviously been much loved, and shows wear and tear—what wouldn't at the age of almost 100!

At Pewabic Pottery, children's place settings were produced as early as 1908, as evidenced by the photo of a wooden display cabinet on the 2nd floor. Mary Chase Perry produced a number of different children's ware motifs. At this time, we have in our historic collection an iridescent dragonfly plate, a plate with a castle motif around the rim, and a plain plate. We know from the historic day books and from photographs that rabbits, turtles, geese, ducks and landscapes were also produced. We would like to appeal to our readers



Hanne Nielson, archivist, and summer interns and staff



“All I want for Christmas is...” not two new front teeth but as many nice images of early Pewabic Pottery children's place settings as possible.

to help us close the gaps in our collection by sharing their knowledge of extant plates and mugs. We would like to complete our records with as many high quality images as possible.

“All I want for Christmas is...” not two new front teeth but as many nice images of early Pewabic Pottery children's place settings as possible.

Hanne Nielson, Archivist

Letter from the Board President

I hope everyone had a wonderful Michigan summer with friends and family while still finding time to visit Pewabic, especially for the Summer Sale. It was a huge success with many thanks to the staff for their tireless effort.

As we head into fall and year end for the Pottery, I am pleased to report that the Pottery continues to make progress against our Strategic Plan. This past summer the board, together with staff, began work on an update to the Campus Master Plan. The Master Planning Task Force, under the leadership of Joe Vassallo, is a talented team with years of planning experience. The Task Force is following a deliberate process of aligning the Master Plan with the mission and vision of the Pottery. The team will work with our consultant to make sure we optimize the use of our existing buildings while realistically assessing the need for additional facilities to serve the community well into the future. Our goal is to approve a final Master Plan by June, 2010.

I am extremely pleased to report that Pewabic will finish the year with a balanced budget. This was a herculean effort by our incredible staff who used great focus and discipline during the

Letter from the Executive Director

I'm pleased to report that Pewabic ended the fiscal year in the black—our 12th consecutive year of delivering successful financial outcomes. The hardworking staff and trustees at Pewabic deserve kudos for their talent and commitment to our mission. Our deepest thanks to the 44 gracious donors who participated in the Community Foundation of Southeast Michigan's Challenge grant. Because of your generosity, Pewabic was able to raise a total of \$65,655 which includes the match.

As with many Michigan arts and culture organizations 2009 has been a challenging year for Pewabic. However, while revenues were down, serious cost cutting measures were enacted that permitted Pewabic to balance its budget. Donors and friends from the foundation community have also helped and we are indebted to you all.

There is more good news—we have been very busy! Here is a quick glance at the number of people we've served in 2009: Pewabic welcomed 35,400 visitors to our National Historic Landmark building. A month long visitor survey in August showed that visitors hailed from 48 states and 18 countries. Our website welcomed almost 54,000 visitors with 107,000 visitors checking out our web store. These sales are vital to

past year to manage day-to-day operations without impacting our programs.

Each of you as supporters also deserves special thanks. The Pottery could not continue to achieve its vision to be a vibrant and respected ceramic arts center without your support. We know you have a choice of many organizations that are in need of your support, and we are grateful when you choose the Pottery.

Thank you for all that you do and I hope each of you will let others know what a great organization Pewabic Pottery is. Please take time to sign up for a class, take a tour, consider a custom project for your home, increase your membership, shop in our store or online, or visit the current exhibition. Your involvement makes a difference!

Neil G. Bristol Jr.
President of the Board of Trustees



Pewabic's sustainability and maintain stewardship of our building and archives.

An important aspect to Pewabic's mission is to serve ceramic artists through exhibitions, sales, employment and developing an appreciative audience for their work. We served over 110 artists this past year. We taught 8,055 youth, most of whom are underserved, through our partnerships with Detroit Public Schools and local community centers. We also served 804 adult students through our new and exciting classes.

Please consider joining the Pewabic Society and as a member enjoy discount shopping for two full months each year! If you can't make it downtown you can still shop online at Pewabicstore.org. Follow us on Twitter or become a Facebook friend, and don't forget to stop by for our annual holiday show which opens November 13th. Thank you for your friendship!

Terese A. Ireland, *Executive Director*



In Her Own Words

Excerpts from Mrs. Stratton's Autobiography

My earliest admiration for art application was given to spatterwork as made by my mother and a friend from whom I received my name Mary Chase. I can see the long sunny room with plants on a wire stand at one end. There was an arrangement above the plants hidden by vines which allowed water to come down making a miniature fountain, spraying the plants—all in a long, narrow room with the sun streaming in and canary birds singing. Working happily on a table, my mother and Aunt Mary Chase each had a toothbrush charged with ink, across which each drew a knife-blade, skillfully directing tiny spots of ink which flew onto a sheet of Bristol board, on which leaves and ferns had been previously arranged. When the ink was dry and the leaves and ferns removed, the silhouetted patterns appeared as delicate works of art. About this time I acquired the word “dainty.”

“When the ink was dry and the leaves and ferns removed, the silhouetted patterns appeared as delicate works of art.”

Perforated cardboard with patterns traced upon it was more within my scope, with the designs carried out in colored yarns. My own effort was a tiny “God is Love,” but I also remember “God Bless Our Home” carried out in shaded greens and browns. Then there were colored reproductions of “Wide Awake” and “Fast Asleep” which came with a subscription to the “Christian Union.” Also, to the delight of my seven year life, from the same publication came a still-life subject which was hung appropriately near the dining room table. The chief object was a glass globe with goldfish swimming



Original home of Mary Chase Perry in Hancock, Michigan

“...Moss rose-buds and lilies of the valley — the most treasured possession of my childhood.”

in it and a plate with peaches and pears together with a half melon with black seeds in its heart. A wonderful mixture, but the colors awoke certain aesthetic chords, besides giving us our first glimpse of ripe fruit from a warmer climate. Another picture, supposed to have come from the Paris exposition, was of a girl standing by two resting horses. The girl’s arm was stretched out along the limb of a tree and I never could tell which was the arm and which was the limb. It is easy to see now that we had few pictures or objects which might lead to art appreciation; but we had a tremendous family zeal in that direction.

A primary school was taught by the sister of our minister’s wife which I attended for a time. My chief remembrance is not connected with a, b, cs, but with some watercolor panels painted by Miss Bruce. When she left the lakes, she gave me a little framed study from her own brush—moss rose-buds and lilies of the valley—the most treasured possession of my childhood. Our friend, Katy Styles, made crosses of finely fringed tissue paper with tiny silk rose-buds in the centre—they were refined and lovely.

Could such influences, meager as they were, have given a bent to my future?

Setting Goals is the Key

The production of beautiful ceramic art is not the only tradition followed at Pewabic Pottery. Pewabic has been a long-time partner with Detroit Public Schools, working to educate youths not only in the practice of art, but in the administrative and retail fields as well. Since 1985, Pewabic Pottery has welcomed hundreds of Detroit Public Schools students into the Summer High School Apprentice Program. This past summer, Pewabic was happy to offer two programs with a total of 24 teens from the Detroit International Academy and other various Detroit high schools.

A former Pewabic employee (and a former apprentice in 1998), Djenava “DJ” Tate, visited Pewabic in July to talk about her journey to success that began at the Pottery. When DJ took part in the Pewabic program, she was just finishing her junior year of high school and was anxious to begin looking for jobs. DJ enjoyed her time here so much that after graduating she was hired as a Gallery Associate. DJ also served on the New Product Committee, representing the customers’ opinions and concerns. In her spare time, DJ put herself through beauty school to become a stylist.

She told her Pewabic coworkers of her future dreams. DJ, who was always dressed to the nines, wanted to be a part of the fashion industry. In 2007, after seven years of great service to Pewabic, DJ left to work at Nordstrom in the Twelve Oaks Mall. She works as a personal shopper and has built her own base of clients. She also assists in the coordination of fashion shows and



Djenava Tate, former Pewabic summer apprentice

luncheons. Her ultimate goals include becoming a buyer and eventually becoming a CEO in the fashion industry. “Despite whatever obstacles you have, you have to stay diligent to your goals,” she told the apprentices.

DJ firmly believed in her dreams and pushed herself to make a change and be successful. Leaving Pewabic after so many years was a huge step for her to take, but she looks back upon her time at the Pottery fondly. Pewabic gave her an opportunity to be creative and grow, as an artist and as a young woman.

DJ enjoys opportunities such as her summer visit to Pewabic that allows her to share her experiences and advice with other young people.

Lindsay Loridon



DJ and summer interns at Pewabic Pottery



Gifts and Memberships to Pewabic Make a Difference

Many thanks to the generosity of our supporters during 2009. The following list reflects donations from Foundations and Corporations. A complete listing of all donations can be found on the website at Pewabic.org.

Pewabic Pottery programs are made possible through this support. Pewabic depends upon your help to maintain our National Historic Landmark Building and support educational and museum programs.



Foundation and Corporate Donors

Americana Foundation
 Bank of America Charitable Foundation
 Blue Cross/Blue Shield of Michigan
 Edith Briskin
 Andrew and Gayle Camden Fund
 Caulkins Family Foundation
 City of Detroit/Michigan Council for Arts & Comerica Charitable Foundation
 Community Foundation for Southeast Michigan
 Louisa St. Clair Chapter Daughters of the American Revolution
 DeRoy Testamentary Foundation
 Detroit Free Press Summer Dreams
 Detroit Industrial School
 Detroit LISC Local Initiative Support Corporation
 Erb Family Foundation
 Edith and Benson Ford Fund
 Maxine and Stuart Frankel Foundation
 Eugene and Mary Ann Gargaro Fund
 Roger and Joana Garrett Fund
 Grosse Pointe Questors Chapter 147
 John A. & Cynthia Gunn Fund

Alice Kales Hartwick Foundation
 William Randolph Hearst Foundation
 Hudson Webber Foundation
 Julius & Cynthia Huebner Foundation
 Chaim, Fany, Louis, Benjamin & Ann Florence Kaufman Memorial Trust
 Kaufman Memorial Trust
 Kellogg Corporate Fund
 John & James L. Knight Foundation
 Kross Family Fund
 Kresge Foundation
 JP Morgan Chase
 Masco Foundation
 MGM Mirage Voice Employee Volunteer Program
 Michigan Humanities Council
 PricewaterhouseCoopers, LLP
 Roberts Family Foundation
 Ronald McDonald House Charities
 The Ruffner Foundation
 D. W. Salisbury Group

State of Michigan Council for Arts & Cultural Affairs
 Shirley K. Schlafer Foundation
 Skillman Foundation
 TCF Bank
 Tech Soup
 Triford Foundation
 Village Women's Club
 Samuel L. Westerman Foundation
 Charles R. Whitney Foundation
 Rudolph Wilhelm Foundation
 Matilda Wilson Fund

We ask that you use the remittance envelope provided in this newsletter to renew your membership.

Snowflakes are Here!

As moisture gathering in winter skies plummets through sharply descending degrees of temperature, the purity of water and the geometry of sudden cold forms the countless crystalline structures we call snowflakes.

The Pewabic snowflake collectibles will join the Twelve Days of Christmas Collectible series which debuted four years ago. Three specially designed snowflake ornaments and a snowflake trivet are new for 2009. All were designed by Pewabic artisans. The Snowflake Collectible series will continue for the next several years.

Additional new tiles being introduced this year include a 3 x 3 sculpted pine cone, a 4 x 6 embossed reindeer and a 3 x 9 Nekhbet Egyptian multi-glazed tile. All three were from original tiles made or drawings by Mary Chase Perry Stratton.



What better time than the holiday season to be reminded that the unique beauty of each snowflake, like each handmade piece of ceramic art, and like each person, must be appreciated while it lasts.

Andrew Brown

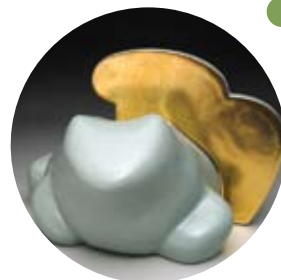
William DePauw Exhibition • January 15 – March 7, 2010

Opening Reception Friday, January 15 • 6–8PM

DePauw teaches at Tulane University in New Orleans, where he is Professor of Practice in the Newcomb Art Department. He graduated from Northern Michigan University where he first majored in painting. He then did post-baccalaureate studies at Wayne State University. He received an MFA in ceramics from Tulane University in 2004.

His work exhibits very sophisticated abstract forms with beautiful surfaces that reference both the human body and the landscape.

Tara Robinson
*Curator of Ceramics
and Contemporary Exhibitions*





2010 Calendar of Events

All events are free and open to the public unless noted.



GALLERY

William DePauw

January 15–March 7

East and West Gallery

Opening Reception Jan. 15 • 6–8pm

Christyl Boger and Malcolm Mobuto Smith

March 12–May 2

Mark Burleson

May 7–July 3

Tom Phardel

September 10–October 31

SPECIAL EVENTS

FEBRUARY

Valentine Shopping Night

February 10 • 6–9 pm

Refreshments, door prizes, special discounts

Empty Bowls at Pewabic Pottery

February 20 • 11 am–2 pm

Buy a bowl made by artists, students and volunteers, (from \$5 to \$20) and fill it with soup from 5 area restaurants. All proceeds go to Gleaners Community Food Bank.

MARCH

Member Appreciation Month

March 1–31

Double discounts on all Pewabic items for members

Annual Birthday Celebration

March 15 • 10:00 am–3:00 pm

Celebrate our 107th year with the Pewabic staff. Tours, demonstrations, cake and door prizes. Free and open to the public.

Opening of a new special exhibition in the Museum highlighting

Pewabic's founder Mary Chase Perry Stratton's life and her contribution to the ceramic arts in America.

APRIL

Pewabic's Executive Director, Terese Ireland conducts a Pewabic Tour

Sunday, April 18 • 1:00 pm

Reservations are needed. \$20 per person. Tour is limited to the first 30 people who call. This one-hour tour will take you up-close and behind the scene of Pewabic Pottery. To reserve please call 313.822.0954 x 0

MAY

Special Shopping event for Mother's Day

May 5 • 6–8 pm

Open to the public, refreshments, door prizes, special discounts for members

JUNE

"For the House & Garden Show" Ticketed Preview Party

Thursday, June 4 • 6–9 pm

Tickets \$75 per person
Call 313.822.0954 or tickets available on-line at

The weekend event continues on Friday, Saturday and Sunday, June 5–7 • 10 am – 5 pm
Free and open to the public.

AUGUST

Annual Summer Sale 30–50% off on Pewabic Pottery and Overruns

August 20–22

Additional details will be announced in early spring on the Pewabic Pottery website.

Family Fun Day

Tuesday, August 24 • 10 am–3pm

One time fee of \$5 for some activities such as jewelry making, mask decorating and free activities include clay target practice, clay Olympics and more.

SEPTEMBER

Member Appreciation Month

September 1–30

Pewabic Members get double discounts on all gallery purchases.

To become a member call 313.822.0954 x 114

OCTOBER

Annual Raku Party

October 9

EDUCATION

Education Classes for Adults and Children begin in January.

Small class sizes, short sessions and workshops are available. A variety of Introduction Classes and Workshops allow students opportunities to try ceramics for the first time or to continue developing skills. For a complete list of classes please go to pewabic.org

MUSEUM

Pottery Closed

- New Year's Day
- Martin Luther King Day
- Memorial Day
- July 5 – for Independence Day
- Labor Day
- September 30 – Inventory
- Thanksgiving Day
- Christmas Day

Pewabic Pottery is
FREE & Open to the Public

Mon–Sat • 10AM–6PM
Sun • NOON–4PM



PEWABIC POTTERY'S
2009 ANNUAL HOLIDAY
INVITATIONAL

Earthy Treasures

Three New Collectible Snowflake Ornaments (5"x5")

Iridescent Snow Drop Vase (6" tall)

Unique holiday gifts, created by over 100 ceramic artists, are featured at the show.

SPECIAL SHOPPING NIGHT • **OPEN TO THE PUBLIC**
 Wednesday, December 9, 2009 • 6-9PM • November 14 - December 31, 2009

NEW PEWABIC ITEMS FOR 2009
 Snowflake Collectible Ornament Series • Snowflake Trivet

EVENTS • PEWABIC

SINCE 1903

Pewabic Board of Trustees

Officers

Neil G. Bristol, Jr.
President

Mary Wisgerhof
Vice President

Leslie Lister
Secretary

Joseph Vassallo
Treasurer

Trustees

Kenan Bakirci

Edith Briskin

Beth Carnaghi

Kenneth Crutcher

Frank Dulin

Anmarie Erickson

Deborah Ferris

Roger Garrett

Carole Harris

Urban Jupena

Harry Kurrie

Carey Ford Mammen

Sharon Snodgrass

Susanne Stephenson

Marie Woo

Executive Director

Terese Ireland



PEWABIC POTTERY

10125 East Jefferson Avenue
Detroit, MI 48214

t 313.822.0954

f 313.822.6266

www.pewabic.org

www.pewabicstore.org

Return Service Requested

Nonprofit
Organization
U.S. Postage
PAID
Detroit, MI
Permit No. 2169

Pewabic Pottery is a 501 (c)(3) non-profit organization.

Pewabic Pottery is an equal opportunity employer and provides programs and services without regard to race, color, religion, national origins, age, or sex.