



Pewabic Pottery is Dedicated to the Advancement of the Ceramic Arts

Volume 22 · Number 2

In Her Own Words

Excerpts from Mrs. Stratton's Autobiography

A New Building

We began to look for property — a vacant lot where a suitable building might be erected. We discovered a lot in the middle of a block, on which there were no restrictions. It was three hundred feet deep and we decided to place the building well back, so that a long stretch of lawn reached to Jefferson Avenue. A line of maple trees was planted down one side and on the other, young elms followed the walk.

Having a practical problem in architecture, we consulted William Stratton, and explained our requirements as far as we knew them. We hadn't sufficient experience yet to keep us from making mistakes, nor could we possibly foretell to what extent our building might be used. Mr. Caulkins, being of English descent, had a strong predilection for the architecture of his forefathers. Whether suitable or not for a manufacturing place or whether consistent with the purpose in mind, we settled upon an exterior which had its precedent in an old English Inn from the Kent district. It was long, low, and rambling, of brick in the lower part with stucco and beams in the second story. This formed the first section which led into a high two-story room, where our kilns were to be. This part was suitably of brick, inside and out, and looked strong and fire-proof as it really was. The outside walls had brick buttresses which made it seem like a fortress with windows high up, swinging outward.

At the front door a stairway led directly up to the exhibition galleries, one of which had a fireplace. Three rooms with generous proportions, opened into each other and had low casement windows with diamond leaded glass. Three other rooms were for office work and studios.

Looking forward at that time, I fully expected to be able to occupy one of these, to sit and design and plan all our work. As a matter of fact my "studio" has turned out to be every part of the building from cellar to roof. The

pine woodwork downstairs in the working part was intended to be left to age into a warm buff as time went on. However, one day when the painter thought he had waited too long for directions, he used his brush with a dark umber and stained all the doors. When I came in and found all the dark spots in otherwise light walls, I was disappointed that our intention had been irretrievably lost. When I questioned the painter, his reply was that he had to do something.

The upstairs woodwork included cases completely lining the exhibition rooms except for the window embrasures. The sills were more than a foot deep and as soon as our kilns were in operation, we made large tile the full depth, and three inches thick, for window sills. They were glazed a brilliant dark brown, almost a mirror black, which many times since has reflected the beauty of the various colors from the jars that have rested upon them.

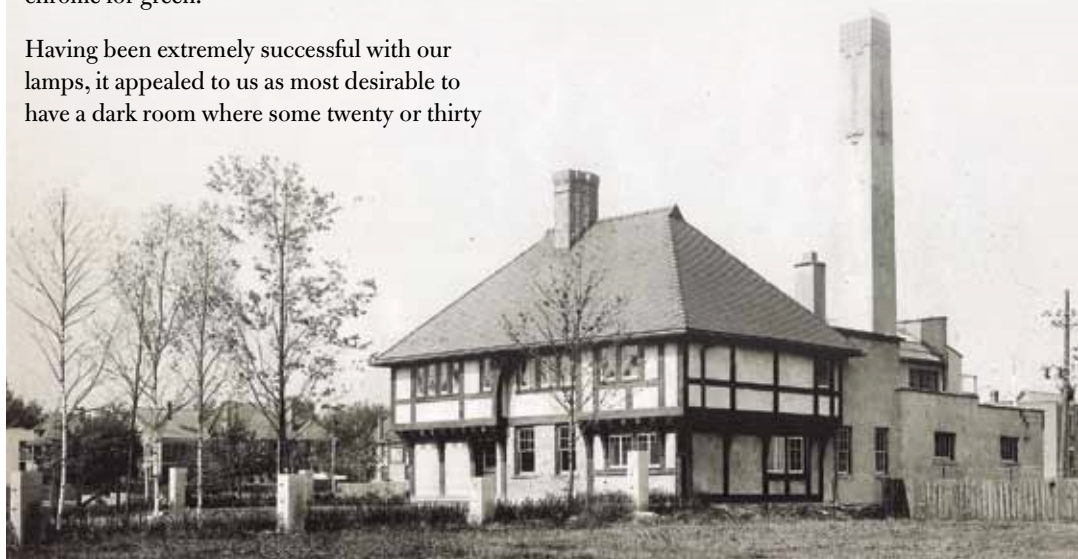
Then, too, there were the floors to consider and as the building proceeded to completion, our workers were kept busy making plain six inch tile for the main rooms. In the smaller rooms, we ventured to lay more fanciful patterns, using bits of color made by staining the clay body with cobalt for blue and chrome for green.

Having been extremely successful with our lamps, it appealed to us as most desirable to have a dark room where some twenty or thirty

lamps could be attached to electricity and displayed at will. From this room, a large door led to what we termed "the Gallery" which it really was — with a balustrade overlooking the kiln room. Perhaps this was the only dramatic or stagy thing in the building. We expected to be able to look over the rail and keep track of the kilns when they were firing.

Our kilns were oil-burning and required the natural draught to maintain a proper combustion, which we could control from the kiln. It was more wonderful than it is possible to express in words, to be able to have all this equipment and machinery, which would allow us to carry out so much more work, and, we hoped, better work.

"The whole process of building was inspiring and glorifying to our pride. Most important of all was the tall, well built chimney stack which went up into the air some forty feet above the tile roof. We felt that we should like some characteristic designation to indicate its use and a strong design of large colored tile defined the top. It was not to be a mere factory stack with its flag of common toil rising into the air. From its tall height were to rise vapors from the sculptured forms in the kilns below; and furthermore, would indicate to all comers the intention and effort which were dependent upon its kindly office."



Letter from the Board Chair

October is the first month of the Pewabic Pottery 2012 fiscal year. We, the Pewabic Pottery Staff and its Board Members, stand together at this moment stronger than ever. Pewabic closed fiscal year 2011 in a positive financial position. This does not happen by accident. Each department is continuously active in building strength on strength. They are training and developing staff; designing and implementing new products, programs, and efficiency measures; and integrating individual department efforts into the seamless whole that is the Pewabic Pottery. Pewabic staff members are superb. We invite you to come to Pewabic and meet them. You will be delighted.

The Board of the Pewabic Pottery has its own role in ensuring Pewabic's strength and relevance into the future. We recently added two new members to our Board of Trustees and one new member to our Advisory Council. Let me introduce you to them...

Paul Kotula has a long association with Pewabic as supporter and teacher. He is a well-known and respected ceramic artist and gallery owner. Paul is known for his discovery and promotion of new and exciting artists. Paul has impeccable taste and served for many years on Pewabic's exhibition committee. He currently teaches ceramics at Michigan State University. Paul has joined the Pewabic Society as an Advisory Council Member.

Rick Portwood founded Display Group in 1991 after working in his family's display business for several years. Over 20 years, Display Group has grown to become one of the largest event production companies in the Detroit area. Since moving

the business to the city of Detroit in 1992, Rick has purchased two historic buildings totaling 200,000 square feet in which to house his rental props and event inventory. Rick is a recipient of the **Crain's 40 Under 40 Award**, as well as **Northwood University's Outstanding Alumni Award**. Rick resides in Grosse Pointe Park with his wife, Cindi, and their two children. Rick has joined the Pewabic Society as a Board Trustee.



Laura Rodwan is a Detroit resident, owner of Rodwan Communications, LLC., and long time Pewabic supporter. She worked in the Archer administration. She is a member of the Detroit Regional Chamber Board, Sinai-Grace Hospital Advisory Board, and several other non-profit boards. Laura mentors fourth graders in the Detroit Public Schools as a volunteer with the Big Brothers and Big Sisters of Metropolitan Detroit. Laura has joined the Pewabic Society as a Board Trustee.

I invite you to read our newsletter thoroughly, join us electronically, and, most importantly, visit the Pewabic Pottery often to see what's what and what's new.

Mary Wisgerhof

Mary Wisgerhof,
Chairman

Letter from the Executive Director

Dear Friends:
We strive every day to maintain Pewabic's National Historic Landmark Building and campus so that it is a welcoming site for our members and 30,000 annual visitors. This stewardship is also a vital part of Pewabic's mission. But good stewardship poses many challenges and here is our latest: Chimney damage!

This past winter Pewabic experienced water damage to its large chimney, which rises a majestic 47 feet over the building. Pewabic's chimney is an iconic symbol of our 104-year-old building. Stucco and tiles have fallen off the chimney and need to be replaced. This damage is highly visible from Jefferson Avenue where chimney stucco has fallen away revealing bricks underneath. We regret to see our chimney in such a shabby condition to welcome our many guests.

Since this past spring, Pewabic has collaborated with the generous chimney experts at DTE who have provided much free counsel on how to best proceed with both inspection and repairs. A very complete inspection of the interior and exterior chimney in June revealed these findings: Severe water damage in the first 10 feet from the top of the chimney; missing chimney cap; severely damaged tuck pointing; missing tiles and lightning rods. Amazingly, the interior chimney shows little damage and is safe for the continued and heavy weekly usage it receives. This activity is vital to Pewabic's financial health. Pewabic has been advised that it must repair the chimney prior to the upcoming winter!



Repairs to a National Historic Landmark building are a complicated matter. These must adhere to the Secretary of the

continued on next page



Letter from the Director of Development

I want to take a moment to thank all of our supporters who have given to Pewabic over the past year. In my first year as Director of Development I have met many wonderful individuals, foundations and corporations who have generously supported Pewabic in numerous ways. It has been an exciting year with many new accomplishments and changes.

I am pleased to announce a very generous gift from **PNC Bank** to support **Pewabic Pottery's Pre-School Program**. This newly developed program has been launched at Beard Elementary School in Detroit to provide fifty underserved 3-5 year olds with a ceramic arts education program designed to give the children activities that will prepare them for kindergarten. The curriculum integrates ceramic arts with academic subjects to provide pre-reading, pre-math, science and social studies programming.

In addition to our education programs that serve over **8,000** underserved Detroit Public School children annually, we continue to provide our unique **Bedside Art Program** to over 600 hospitalized children at Children's Hospital of Michigan. We are pleased to announce that two new funders; **CIGNA Foundation** and the **Junior League of Detroit** have given generous gifts to support this crucial program. Pewabic has also reached out to a number of additional funders to further expand this program.

It has been said that "It takes a village to raise a child." Your support has a direct impact on the lives of all of the children that we provide services to.

Members are the foundation of our organization. Your continued support helps sustain Pewabic as an organization and allows us to continue providing educational programs and services to our community as well as preservation of our history.

Interior's Standards for Rehabilitation. These require that repairs and alterations must not damage or destroy materials, features or finishes that are important in defining the building's historic character. Deteriorated historic features need to be repaired rather than replaced. Our repairs will adhere to these guidelines.

The cost to repair Pewabic's historic chimney repair is \$125,000. Pewabic has already raised \$2,000 from the Grosse Pointe Questers to support chimney repair and is currently engaged in discussion with other foundations and private individuals.

Won't you please help us, too? To make a gift to the campaign to help restore our chimney, please watch your mail in the next few

We value your commitment to Pewabic and I know that you understand the value of supporting Pewabic Pottery. I would like to invite you to think about giving the gift of membership this holiday season. A Pewabic gift membership is a unique gift that benefits the recipient as well as the giver (all memberships are tax-deductible). **Please take a moment to ensure that your membership is current and use this opportunity to renew your membership with the remittance envelope that we have provided in this mailing.**



Historic preservation of our iconic facility is very important to the future of Pewabic. In this newsletter you will read about the **"Save Our Chimney" Campaign** and its importance to the preservation of our **104-year-old building**. **We are reaching out to you, our friends and supporters to help us raise the funds to restore and preserve this important piece of Pewabic history. You can do your part by supporting our 2011 Annual Fund. Watch for it in your mail over the next few weeks.**

I am always open to your suggestions, ideas and comments that will help Pewabic grow as an organization. Please feel free to contact me directly at 313.626.2002 or at sschuster@pewabic.org if you would like to share your thoughts with me, if you need more information about making a gift, becoming a sponsor or if you would like a personal tour of Pewabic.

I look forward to hearing from you!

Sandy Schuster
Director of Development

weeks for our 2011-12 Annual Appeal letter. You can also call Sandy Schuster, Director of Development at 313.626.2002 or sschuster@pewabic.org. Look us up on our website Pewabic.org or our Facebook page facebook.com/pewabic.

Cordially,

Terese A. Ireland, *Executive Director*

New Faces in Education

Recently, the Education Department said goodbye and good wishes to a veritable Pewabic fixture, Jane White. Jane came to Pewabic armed with an MFA from Indiana University. She developed many innovative classes, seminars, and programs, keeping student interest high, streamlining and refining many processes to keep the technical standards high. We said goodbye at a wonderful farewell party with Pewabic staff, trustees and students.

With Jane's leaving we are very proud to announce that her Education Studio Technician, Chrys Bonnay-Lewis, has been promoted to Manager-Adult Programming. Chrys comes to Pewabic from Center for Creative Studies, where she received her BFA in Ceramics. She is also an experienced ceramics instructor. Replacing Chrys as the Education Studio Technician is Audrey Long. Previously Audrey worked in the Fabrication Department.

This dynamic duo recently mounted the Annual Staff & Student Exhibition. Bonnay-Lewis says, "as our first show together since taking on our new roles in the Education studio, it was a pleasure to be able to work collectively and move the Annual Staff & Student Show in a new direction. Expanding on the great foundation laid out by our predecessor this show proudly illustrates the growth and progress that the Education students and the department have experienced over the last year."



Left to Right: Audrey Long, Alex Thullen, Myla Chaput, Chrys Bonnay-Lewis

Awards were presented to the following:

The Laura Cataldo Jupena Award:

Alex Thullen for *Adventures in Thermal Reduction*

Mario Woo Awards:

1st Place – Chrys Bonnay-Lewis for *Option #21*

2nd Place – Jennifer Sperber for *Forest Box*

Honorable Mention –

Jennifer Poor for *Cups*

Harry Swanson and Joan Symbowski for collaborative work *Baby Circus Elephant*

Ruth Brown for *Triangle Dish*

John and Suzanne Stephenson Awards:

1st Place – Audrey Long for *Bottles*

2nd Place – Myla Chaput for *Pot Melt Bowl*

Honorable Mention –

Corey Scillian for *Age of Arrogance*

William Harning for *Didgeridoo*

Elizabeth Youngblood for *I ish*

“...it was a pleasure to be able to work collectively and move the 40th Annual Staff & Student Show in a new direction... This show is a great example of the range in the Education Studio as well as Pewabic's other creative departments.”

“This exhibition afforded Audrey and I the opportunity to really showcase the diversity of art produced by both students and staff of Pewabic. People were surprised to see work displayed from a variety of mediums. This show is a great example of the range in the Education Studio as well as Pewabic's other creative departments.”

Gerri Kelley

Director of Programs

Find the Pewabic Pottery Education Studio on Facebook at facebook.com/Pewabic.Pottery.Education.Studio

Pewabic's Education brochures are now available on-line. Adult and youth offerings, classes for all skill and confidence levels, full and half semester, and one-day offerings “to fit your schedule.”



Scott Fountain, Belle Isle, Detroit, Michigan

When Detroit's most eccentric bachelor, James Scott, died at 79 on March 5, 1910, he bequeathed his \$500,000.00 estate to the city to build a fountain on Belle Isle. One string was attached to the bequest: Along with the fountain the will provided, the city would erect a life-size bronze statue of the donor. "Only a good man who has wrought things for humanity should be honored in this way," protested Bishop Charles D. Williams.

James Scott was a loafer and a gambler. He told off-color stories, and he perpetrated vindictive practical jokes. J. L. Hudson, the merchant who headed the Detroit Municipal League, summed up the case against acceptance of the bequest in a few brief but telling words: "Mr. Scott never did anything for Detroit in his lifetime and he never had a thought that was good for the city."

The father of James Scott had invested wisely in Detroit real estate, and had left his son a fortune. It was said that James Scott never did an hour's manual labor in his life. His days were spent as a leisurely man-about-town, enjoying convivial talk, and pleasant companionship. His best reputation seemed to be among waiters, newsboys and other servitors, among whom he was known as a man generous with tips.

Mayor Philip Breitmeyer finally decreed: "I don't believe the city has a right to insult any of her citizens by refusing a gift for such a good cause. I say the bequest should be accepted." He recalled: ... "Jim always liked Belle Isle, and loved to see the children there."

In 1925, Cass Gilbert, the New York architect who planned the Detroit Public Library, won a competition for the design of the glistening white memorial at the lower end of the city's pleasure island. Gilbert drew motifs from Detroit's history. A great outer bowl of marble was reached by ascending steps, and three concentric marble rims led up to the main bowl. A central pedestal of carved figures upheld the topmost basin.

A many-jetted circular spray of water rose from the rim, with the main jet in the center towering skyward. Neptune was depicted on the fountain, so were dolphins, lions, and turtles spouting crystal streams of water.

The Dolphin Design of the tile surrounding the base was done by Pewabic Pottery in 1922. Historic Pewabic Day books indicate that the fountain installation was installed in 1923 at a cost of \$1,500.00.

In September, 2010, in an effort to repair the leaking fountain, the Pewabic tiles that once adorned the rim of the fountain for 85 years were removed during the process of recementing the basin. The Friends of Belle Isle are fundraising to replicate the Pewabic tiles. A commemorative tile has been created as part of their fundraising plan. To find out more please go to the Friends of Belle Isle website, call the office at 313.331.7760, or Linda Cunningham at 313.527.7646, lindacunningham@aol.com.

In September, 2010, in an effort to repair the leaking fountain, the Pewabic tiles that once adorned the rim of the fountain for 85 years were removed during the process of recementing the basin. The Friends of Belle Isle are fundraising to replicate the Pewabic tiles. A commemorative tile has been created as part of their fundraising plan.



House & Garden Preview Party

The House and Garden Preview Party fundraiser that was held in June was a tremendous success! We more than doubled our projected revenue through generous support from sponsorships and ticket purchasers. I want to give a special thanks to the Pewabic Board of Trustees for their extensive involvement and support of the event. Planning will begin in the next few months for the 2012 House and Garden Preview Party Fundraiser.

The House & Garden Preview Party is Pewabic's only fundraising event each year. Private and corporate sponsorships for this event are critical in helping to raise the funds that support extensive community arts education programs. These programs serve over 3,500 underserved Detroit Public School children along with 600 hospitalized children in addition to supporting the preservation and conservation of Pewabic's historic legacy.

The 2011 Garden Party Committee included Edith Briskin, Roger Garrett, Corey Scillian and Mary Wisgerhof.

We wish to thank Katrina Hancock of WDIV-Local 4 for donating her time and talent as our auctioneer!



Marcia McDonald, Barbara Cox, Carole Harris, Dr. Gloria House, Hilda Vest



Eugene Gargaro & Roger Garrett

Alexis Ellison, David Zink, Heather Simmet, Audrey Long



Norm Silk, Dale Morgan, Rex Dotson, Max Lepler, Brian & Beth Carnaghi

Photos Courtesy of Paul Erickson

Platinum

Ms. Edith Briskin
Roger Garrett
MacDonald Financial Services, Inc.
PricewaterhouseCoopers LLP
David Salisbury

Gold

Jim & Ann Nicholson

Silver

Blossoms
Caesars Windsor
Annamarie & Paul Erickson
Guardian Alarm
Hodges Imported Cars
Grady & Patrice Merritt
Wayne County Community College District
WDIV-Local 4

Bronze

Louis Asmus
Cash & Associates, Inc.
Consolidated Document Solutions
CoStaff Services
George Johnson & Company
H&P Protective Services, Inc.
Urban Jupena & Steven Levicki
William H. Krebs & Renee' D'Alleva
Peter & Peggy Kross
Madison Maintenance

Merrill Lynch Private Banking & Investment Group
- Frank Morelli-The Mig-Vigi Group
Michigan Office Design, Inc.
Catherine & Michael Murray
Joy & Allan Nachman
Plante Moran Financial Advisors
Priority Health
Tara Robinson & Eugene Kuthy
Wilson, Kemp & Associates, Inc.
Yoga Shelter

Benefactor

Mr. & Mrs. Neil G. Bristol
Carey A. Ford & Jens Mammen
Eugene Gargaro
Tim & Marilyn Mast
Marsha & Jeffrey Miro
Mrs. Dean E. Richardson
Jan Sansoterra
Max & Mary Wisgerhof
Dr. Ruth Whipple

Patron

Beth & Brian Carnaghi
Mr. & Mrs. Byron Gerson
Huntington National Bank,
Wealth Advisors Group
Marty & Helen Katz
Barbara & Michael Kratchman
Dr. Myron & Joyce LaBan

Pointe Alarm
Ann C. Rohr
Peter Ruffner
Marilyn L. Wheaton

Sponsor

Effie Ambler
Marcia & Marty Baum
Terry Blackhawk
Cathy & Ron Borawaski
Jennifer Brown
Michele Calisi
Carol Camiener & Jim Herrington
Eugene & Angela Cosma
Barbara Cox
Anne Crane
Dollie & Fred Crapotta
Eleni Currie
Mr. & Mrs. Richard F. Fellrath
Hadley Mack French
Deborah J. Gillespie
Carolyn Hardy Grannum
Hamilton Anderson Associates
Carole Harris
Linda Hayman
Robert & Suzanne Hicks
Ora Holston
Gloria House
Sue Ellen Jurcak & Virginia Ficarro
Cara & Yanni Koukoulas
Mr. & Mrs. Harry Kurrie
Judith LaBeau
Judy Leonard

Max Lepler & Rex L. Dotson
Linda & Ali Malekadeli
Jeff & Marie Mastracci
Marcia McDonald
Monique Molnar
Mrs. Ayers Morison
JJ Mulligan
Mr. & Mrs. James Mulligan
Linda & Dave Olshefsky
Nancy Rands
Larry & Betty Roberts
Ron & Dora Rolando
James Ruble
Elizabeth Sabourin
Corey Scillian
Ken & Sharon Snodgrass
Stan Simek
Mr. & Mrs. Clifford Snyder
Susanne Stephenson
Douglas & Kaoru Stratton
Richard & Cheryl Swarouth
Dr. & Mrs. Marvin Taragin
Marilyn Trent & Rod Birleson
Joseph Vassallo
Hilda Vest
Irene Walt
Scott & Renee' Yaldo
Susan Yates

Donations

Maggie Allesee
Anonymous
Angela Cosma
Maxine & Stuart Frankel Foundation

Mado Lie
Richard & Susan Slaine
Mr. & Mrs. Tom Jeffs
Janis & Bill Wetsman-
The Wetsman Foundation

In Kind

Atwater Brewery
Allemon's Landscape Center
Canape Cart
Edibles Rex
Fou d'amour Pastries & Catering
Franco Public Relations Group
Golden Spice
Late Night with Jimmy Fallon
Lunch Time Deli
Opus One
Pointe Hardware & Lumber
Saks Fifth Avenue
Shaw PPC Design
Sprout House
Systems Services
The Hill Seafood
The Martha Stewart Show
The Townsend Hotel
Thibault & Moore
Union Street

Guest Designers

David Michael Johns for
DMJ Interiors
Staci Meyers for Dominic
Tringali Architects



2011-2012 Calendar of Events

All events are free and open to the public unless noted.

SPECIAL EVENTS 2011

OCTOBER

Annual Raku Party

Saturday, October 22

Call for details 313.626.2000

NOVEMBER

Earthy Treasures Holiday Show

MEMBERS ONLY PARTY

Thursday, November 10 • 6-8pm

Refreshments, door prizes, special discounts. Must be a member to attend. Call 313.626.2010 for more information or visit www.pewabic.org.

Earthy Treasures Holiday Show

OPEN TO THE PUBLIC

November 11 through December 30

DECEMBER

Special Holiday Shopping Night

Wednesday, December 14 • 6-8pm

Refreshments door prizes, additional discounts for members.

Rochester Kris Kringle Event

Downtown Rochester

Friday, December 2 • 4-9pm

Saturday, December 3 • Noon-9pm

SPECIAL EVENTS 2012

JANUARY

Wit, Fun and Functional Exhibition

January 21-March 18

Group show - Free and Open to the Public - Tara Robinson, Curator of Contemporary Ceramics

FEBRUARY

Empty Bowls Fundraiser for Gleaners Community Food Bank

Saturday, February 25

11am-2pm

Buy a bowl, fill it with soup from area restaurants and support Gleaners!

Bowls from \$5 to \$20

Open to the Public

MARCH

Pewabic's Annual Birthday Party

Saturday, March 10 • 10am-3pm

Tours, Refreshments, Demonstrations
Free and Open to the Public

Simply By Hand:

Architectural Ceramics

From Mary Stratton to Now

Date to be announced in 2012

Member Appreciation Month

March 1-31, 2012

Members get double discounts up to 20% on most gallery purchases.

No other discount coupons apply.

To become a member call

313.626.2000 or 313.626.2010.

EDUCATION

Pewabic's Education brochures are now available on-line. Adult and youth offerings, classes for all skill and confidence levels, full and half semester, and one-day offerings "to fit your schedule."

NEW MAIN PHONE NUMBER

313.626.2000

POTTERY CLOSED

Thanksgiving, November 24

Christmas, December 25

New Year's Eve December 31

New Year's Day January 1

POTTERY SPECIAL HOURS

Extended hours 10am-6pm on Sunday

from November 13 through the holidays

November 23 • 10am-4pm

Christmas Eve Day • 10am-2pm

Wit, Fun and Functional

The work of the artists in this exhibition was meant to delight the user by presenting food and drink in beautiful containers which delight the user with witty shapes, the irony of their decorations. These objects enhance the quotidian aspects of modern life. While you can find perfectly serviceable dishes in Target and Kmart, the objects made by these artists are not produced in the thousands, so that they also offer the owner the opportunity to own objects of relative singularity, and to provide themselves and their families with objects for the table that are a lot more fun than cardboard pizza boxes or Styrofoam plates and cups. And, since clay is primarily mud of a certain type, there are totally recyclable if you are unlucky enough to break one.

Tara Robinson, Curator of Contemporary Ceramics

At time of printing the artists include:



Michael R. Hughes
Mugs and Cups



Lynne Smiser Bowers
Sugar and Creamer



Sue Tirrell
Trout Platter



Scott Lykens
Platter



Emily SchroederWillis
Pitcher



PEWABIC POTTERY

10125 East Jefferson Avenue
Detroit, MI 48214

☎ 313.626.2000

☎ 313.626.2100

www.pewabic.org

www.pewabicstore.org

Return Service Requested

Nonprofit
Organization
U.S. Postage
PAID
Detroit, MI
Permit No. 2169

Generous support
provided by:

HUDSON
WEBBER
FOUNDATION



THE KRESGE FOUNDATION

Pewabic Pottery is a 501 (c)(3) non-profit organization.

Pewabic Pottery is an equal opportunity employer and provides programs and services without regard to race, color, religion, national origins, age, or sex.



PEWABIC POTTERY NEWS

FALL/WINTER 2011-12

SHOP AT PEWABIC POTTERY
FOR BEAUTIFUL GIFTS STARTING FROM \$8

Earthy Treasures

Unique holiday gifts, created by over 100 ceramic artists are featured at the show.

SPECIAL PREVIEW PARTY FOR MEMBERS ONLY
Thurs, November 10, 2011 • 6-8PM
Refreshments & Door Prizes

HOLIDAY GALLERY HOURS
November 13 - December 30, 2011
Mon-Sat • 10AM-6PM
Sun • NOON-6PM

Special Wednesday Night Shopping
December 14, 2011 • 6-8PM
Refreshments & Door Prizes

Conveniently shop online at:
www.pewabicstore.org

Closed Thanksgiving November 24
Open December 24, 2011 • 10AM-2PM

Iridescent Snow Drop Vase (6" tall)
Three Collectible Snowflake Ornaments (3"x3")

Free & Open to the Public
Mon-Sat • 10AM-6PM
Sun • NOON-4PM

10125 E. Jefferson Ave • Detroit, MI 48214
(4½ miles east of Downtown Detroit at Cadillac)
313.626.2010 • www.pewabic.org

EVENTS AT PEWABIC

SINCE 1903

PEWABIC BOARD OF TRUSTEES

Officers

Mary Wisgerhof
Chairman

Annamarie Erickson
Vice Chairman

Joseph Vassallo
Treasurer

Carole Harris
Secretary

Executive Director

Terese A. Ireland

Advisory Council

Kim Ross Clayson
Anne Crane

Eugene Gargaro
Paul Kotula

Barbara Kratchman
Tim Mast

John Roberts, M.D.
Linda Ross

Janis Wetsman
Marilyn Wheaton

Trustees

Edith Briskin

Neil G. Bristol Jr.

Beth Carnaghi

Kenneth Crutcher

Frank Dulin

Roger Garrett

Harry Kurrie

Leslie Lister

Carey Ford Mammen

Patrice Merritt

Rick Portwood

Laura Rodwin

Tara Robinson

Corey Scillian

Sharon Snodgrass

Clifford Snyder

Susanne Stephenson

Davira Taragin