



Pewabic's Michigan Historical Marker Dedicated

With beautiful and balmy weather, over 300 guests visited Pewabic on Saturday, March 12 to see the unveiling of Pewabic's Michigan Historical Marker, take docent led tours, see demonstrations and have a piece of birthday cake.

To coincide with Pewabic's 108th Birthday Celebration, the Michigan Historical Commissioner Lamont Corbin officially dedicated the marker. Also in attendance were several members of the Louisa St. Clair Chapter of the Daughters of the American Revolution, along with Carey Ford Mammen and sister Christine Gettel of the Triford Foundation. It was their great grandfather, Horace Caulkins, who together with Mary Chase Perry (Stratton) founded Pewabic Pottery.



Above: Members of the Louisa St. Clair Chapter of the Daughters of the American Revolution

“Over 300 guests visited Pewabic on Saturday, March 12 to see the unveiling of Pewabic's Michigan Historical Marker, take docent led tours, see demonstrations and have a piece of birthday cake.”

We had many compliments from guests for our staff that day, including Meredith Duckworth (tour guide), Audrey Long (demonstrating tile pressing) and Nicole Maracco (throwing vessels) as well as the gallery associates and volunteers who made the day a success.

Again, we want to thank the Triford Foundation and Louisa St. Clair Chapter for sponsoring the marker.



Above: Cutting the Ribbon — Regent Grace Bliss Smith, Louisa St. Clair Chapter and Carey Ford Mammen, Triford Foundation



Photography courtesy of Paul Erickson



Bottom left: Lamont Corbin, Commissioner, Michigan Historical Commission

Bottom right: Tour group passing through the Kiln Room

Letter from the Board President

I am thrilled to have been elected President of the Pewabic Society Board of Trustees. It is an honor and a privilege to serve in this capacity. I have been involved with Pewabic since 1995 as a student, volunteer, and board member. As president it is my responsibility to help the Pottery grow and thrive and to open her doors ever wider to those who would discover and experience clay art.

I hope that each of you are frequent visitors to Pewabic. It is free and open to the public seven days a week. I encourage you to visit our redesigned website: www.pewabic.org. There you will find information on our mission and long history, tools for planning your visit, our online store, class descriptions and schedules, and opportunities to support Pewabic through memberships and gifts.

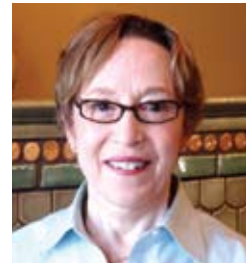
Gallery exhibitions at Pewabic are extraordinary. We just closed a beautiful exhibition: *Contemporary Teapots Ancient Ancestors*. I hope you attended. The teapots were exquisite and many were sold during the show. *Romancing the Rustbelt — Ceramics Inspired by our Heroic Industrial Past* is our current exhibition, running through May 8. Our complete exhibition schedule is in

this newsletter as well as online. The very best way to stay up-to-date with all our happenings is to be a member. Membership has it privileges including discounts, access to member-only sales, and invitations to opening exhibition receptions.

Right now the Pewabic staff and trustees are focused on our major fundraiser for the year: “For the House and Garden” Show and Sale. This is a very popular annual event held in a tent on the Pewabic campus June 2 through June 5. We hope you will stop by and see us. See page 5 for more information about the event.

Thank you for your interest and friendship to Pewabic and its mission. Each of you — new friends and old — make a difference.

Mary Wisgerhof, *President of the Board of Trustees*



Letter from the Executive Director

We welcomed thousands of guests to Pewabic during the holidays and sales were very positive. Sales of Pewabic-made ceramics help employ our artist staff and keep our American historic Pottery operating. For the first time Pewabic-made gift tiles and pottery were popular at Somerset Collection’s *The Detroit Shoppe*. This high-end retail site was dedicated to historic Detroit based businesses and nonprofit art organizations, with sale proceeds going back to Detroit nonprofit art organizations. The Detroit Shoppe is scheduled to reopen this spring at Somerset North in Troy.

Pewabic hosted its annual Empty Bowls event in February and raised almost \$5,000 for Gleaners Community Food Bank. Our Education Department held two workshops called “Bowling for Gleaners” where participants could either throw bowls or decorate exiting bowls for the event. The staff and students look forward to giving back to the community each year.

We are very proud of our first ever National Endowment for the Arts grant. This will support an upcoming 2012 exhibition called: *Simply by Hand: Pewabic Pottery and Contemporary Architectural Ceramics*. Pewabic’s role in the American Arts and Crafts movement and its historic tile legacy will be examined

and our visitors will be introduced to contemporary artists who work in architectural ceramics. Pewabic is very grateful to our curator, Tara Robinson, whose expertise and hard work makes our Contemporary Ceramic Exhibition program one of the best in the city.

Many thanks always to our members, visitors, students and artists. Your support is vital in sustaining Pewabic as a thriving ceramic arts organization and heritage site which now welcomes 35,000 annual visitors.

Special thanks to Pewabic trustees for their unwavering devotion to Pewabic’s mission and well-being. My gratitude always goes to our fine staff who do their jobs so well and meet all our many obligations with such creativity and competency.

See you soon at Pewabic,

Terese A. Ireland, *Executive Director*





Letter from the Director of Development

I want to thank our supporters who have given to the Annual Fund Drive this year. Thanks to your generosity Pewabic experienced over a 17% increase in gifts to the Annual Fund Drive. We greatly appreciate this support. If you haven't made a gift to the Annual Fund Drive, there is still time to help support this effort. You can now donate directly to the Annual Fund Drive on Pewabic's website at www.pewabic.org or by contacting the Development Office at 313.626.2002.

Pewabic has a wide range of educational arts programs for children and youth that span from preschool through high school. Did you know that ceramic arts education programs help reinforce academic learning? Math, science, and language arts concepts are all a part of the learning process that occurs within our educational programs. We serve over 8,000 underserved children annually in Detroit Public Schools. **Your gift has a direct impact on their lives.**

In addition we continue to provide our unique Bedside Art program to over 600 hospitalized children at Children's Hospital of Michigan. **Your support helps make this possible.**

On behalf of Pewabic Pottery I want to thank our new corporate funder of the Bedside Art program, **Health Alliance Plan** and our new foundation funder of our educational programs, **The Karen and Drew Peslar Foundation** for their generous support.

Our membership continues to grow thanks to new members and continued members. We value our members' continued

commitment and support of our efforts. Membership is a great way to show your support for Pewabic and as a member you receive many benefits. **Please take a moment to ensure that your membership is current and use this opportunity to renew your membership with the remittance envelope that we have provided in this mailing.**



Pewabic needs your support now and in the future. Did you know that you can leave Pewabic in your estate plans? There are many ways to do this that will financially benefit you and Pewabic at the same time.

I have really enjoyed my first six months at Pewabic, getting to know our supporters and helping Pewabic grow as an organization and I look forward to meeting more of our supporters. Please feel free to contact me directly at 313.626.2002 or at sschuster@pewabic.org if you would like more information about making a gift, becoming a sponsor or if you would like a personal tour of Pewabic.

I look forward to hearing from you!

Sandy Schuster
Director of Development

HAP Transforms Health and Well-Being through Creative Play

It begins with a lump of clay just waiting to be transformed in the hands of a child at Children's Hospital of Michigan. Will it become a dinosaur, a rocket ship, or perhaps a flower pot? The children also eagerly await their personal health transformation as they begin their medical treatment and journey toward healing, good health and well-being.

"Playing with clay isn't mere child's play," said Chrystal Roberts, director of Community Relations, Health Alliance Plan (HAP). "Creative play helps children express their innermost thoughts and develop their fine motor skills. When it comes to healing, there's a powerful connection between the mind and body, which is why HAP is delighted to support Pewabic Pottery's Bedside Art program, "Fun With Clay."

Sponsoring "Fun With Clay" is one way that HAP fulfills its mission to enhance the health and well-being of the lives we touch. Our free water aerobics classes throughout southeast Michigan help moms and seniors splash their way to good health. HAP provides programs, services and motivational support to help people stay healthy or manage their chronic illness and lead healthier, more productive lives. Members value HAP's worksite wellness and health promotion events, online tools and nurse health coaches. Employers look to HAP for product and benefit solutions that improve quality and curb health care costs.



For more information about HAP, visit hap.org.



Make Plans to Attend Pewabic's 21st Annual "For the House & Garden" Show & Sale, June 2-5, 2011

PEWABIC POTTERY
PRESENTS

for the
HOUSE & GARDEN
21ST ANNUAL BENEFIT SHOW AND SALE

Pewabic will feature two items at this year's show: four new glazes on our popular pine cone vase and a brand new 4" x 6" pineapple tile. The new Pewabic pineapple tile will be highlighted for this year's "For the House & Garden" Show & Sale. The pineapple has served as a symbol of hospitality and warm welcome through the history of the Americas. In colonial America, hostesses would set a fresh pineapple in the center of their dining table when visitors joined families in their homes. The pineapple symbolized the warmest welcome a hostess could extend to her guests. If the visitors spent the night, they would be given a bedroom with a bed in which pineapples had been carved on either the bedposts or the headboard.



Two leading designers have been invited to incorporate the pineapple tile in vignettes they are creating just for the show. Staci Meyers, senior interior designer with Dominick Tringali Architects in Bloomfield Hills has designed a Pewabic tile fireplace and from the design firm DMJ Interiors in Rochester, Melissa Joan Vincent has created a powder room backsplash.



The Garden Party Committee includes Edith Briskin, Roger Garrett, Corey Scillian and Mary Wisgerhof. They have put together a great event this year and it all begins on Thursday, June 2 and is free and open to the public June 3-5.





Join Us On Thursday, June 2, 2011 from 6-9PM, For Our Annual Exclusive "The House and Garden Preview Party" Fundraiser

This unique fun-filled evening is Pewabic's only annual fundraising event. The evening will feature a strolling reception with sumptuous hors d'oeuvres, drinks, entertainment and the chance to see and purchase amazing ceramic art from over 80 contemporary artists as well as Pewabic ceramic art that is made on-site in our historic Pottery! New this year is a small live auction.

Private and corporate sponsorships for this event are critical in helping Pewabic raise the funds that support Pewabic Pottery's extensive community arts education programs. Every year these programs serve over 8,500 underserved Detroit Public School children along with 600 hospitalized children in Children's Hospital of Michigan in addition to supporting the preservation and conservation of Pewabic's historic legacy.

Sponsorships and tickets are still available. Sponsorships start at \$300 and tickets start at \$75.

Please contact Sandy Schuster, Director of Development at 313.626.2002 or at sschuster@pewabic.org for more information.

Sponsorships and tickets can also be purchased on our website at www.pewabic.org under the "Events" tab.



We wish to acknowledge the generous support for "The House and Garden Preview Party" fundraiser from the following businesses and individuals (as of the printing date):

PLATINUM

Ms. Edith S. Briskin
Roger Garrett
PricewaterhouseCoopers LLP
David Salisbury

GOLD

Jim & Ann Nicholson

SILVER

Blossoms
Caesars Windsor
Annmarie & Paul Erickson

Hodges Imported Cars
Grady & Patrice Merritt
WDIV-Local 4

BRONZE

Louis Asmus
Consolidated Document Solutions
CoStaff Services
George Johnson & Company
H & P Protective Services, Inc.
Urban Jupena & Steven Levicki
William H. Krebs & Renee' D'Alleva
Peter and Peggy Kross
Madison Maintenance
Merrill Lynch Private Banking & Investment Group - Frank Morelli-The Mig-Vigi Group
Catherine & Michael Murray
Joy & Allan Nachman
Plante Moran Financial Advisors
Tara Robinson & Eugene Kuthy
Wilson, Kemp & Associates, Inc.
Yoga Shelter

BENEFACTOR

Mr. & Mrs. Neil G. Bristol
Carey A. Ford & Jens Mammen
Tim & Marilyn Mast
Mrs. Dean E. Richardson
Max and Mary Wisgerhof
Dr. Ruth Whipple

PATRON

Huntington National Bank, Wealth Advisors Group
Dr. Myron & Joyce LaBan
Ann C. Rohr
Peter Ruffner
Marilyn L. Wheaton

SPONSOR

Effie Ambler
Deborah J. Gillespie
Hadley Mack French
Cara & Yanni Koukoulas
Mrs. Ayers Morison
Ken & Sharon Snodgrass
Richard & Cheryl Swarthout
Irene Walt

DONATIONS

Anonymous
Angela Cosma
Maxine & Stuart Frankel Foundation
In honor of Edie Briskin
Pat & Tom Jeffs
In Honor of Roger Garrett

IN KIND

Atwater Brewery
Allemon's Landscape Center
Canape Cart
Edibles Rex
Fou d'amour Pastries & Catering
Golden Spice
Pointe Hardware & Lumber Systems Services
The Hill
The Martha Stewart Show
Thibault & Moore
Union Street



In Her Own Words

The vogue of the moment was for quite dull surfaces, and it was apparent that an increase of kaolin achieved this result, at the heat we were firing — around two thousand degrees Fahrenheit — or from cone 04 to 02. A different texture was obtained by increasing the whiting and a quite different waxy matt by omitting part of the kaolin and adding a large percentage of zinc oxide. By making these changes an always varying scale of effects could be secured. The special type of glaze which appealed to Mr. Burley was characterized by a semi-matt finish, with a color which was not definitely solid.

Thus far all the objects which were sent to Burley's in Chicago were shades of green which made a consistent though somewhat too uniform a showing when grouped together on their shelves and tables. I began to experiment with another color effect, which was gained by dipping in the same glaze-mix but omitting copper, a proportion of iron and umber were added. This came out a soft but rather rich brown. It was a nice shade but almost too monotonous and quiet.



Photo from *The Pewabic Pottery* by Lillian Myers Pear

Again I made the same glaze using uranium for color running the percentage up and down, thereby securing some lovely buffs — some of a creamy order like old parchment, others warmer in tone so that they approached an orange shade. These proved very acceptable on individual pieces, but were a little tame and smooth.

It was a natural sequence to combine these trials. This was done by taking one of the brown pieces, after it was fired, and redipping it in one of the new buff glazes showing two combined into a warm, sunny tone with deeper shadows coming through. The effect appealed to me as distinguished and unusual — also that it would harmonize with furnishings which were in vogue. Mr. Caulkins did not seem to care for the brown tones, greatly preferring our soft greens, and fearing that our work might lose its individuality by departing from the colors which were proving desirable.

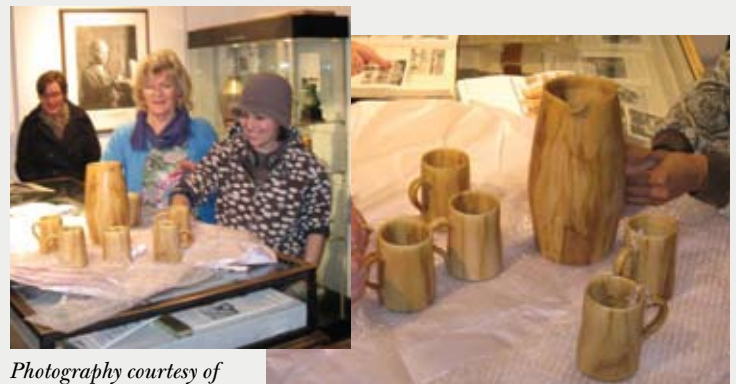
What is a Growler?

The Museum at Pewabic Pottery recently acquired this rare growler set designed by Mary Chase Perry. Archivist Hanne Nielsen identified the year when it was made to be circa 1905. Several of the mugs are stamped with the maple leaf design used at that time.

Now you may ask ... what is a growler?

Before the advent of bottled beer, fresh beer was carried from the local pub to one's home by means of a small-galvanized pail. Rumor has it that when the beer sloshed around the pail, it created a rumbling sound as the carbon dioxide escaped through the lid, thus the term "growler" was coined.

It is not known why Mary Chase chose to name her popular pitcher sets *growlers*, and the mugs *steins*. A set could consist of a pitcher and four to six tumblers or mugs with handles. The growler sets were first produced in the Stable Studio on John R. Production continued until c. 1915 when Prohibition may have



Photography courtesy of *Mario Lopez*

contributed to a new name: a Boston lemonade set. Now this writer does not know exactly what kind of lemonade was served in Boston at that time, but one can speculate, right?

Once again we appeal to our readers to help us close the gaps in our collection by sharing their knowledge of extant mugs, plates, pitchers, vases. We would like to complete our records with as many high quality images as possible.

Hanne Nielsen, Archivist



2011 Calendar of Events

All events are free and open to the public unless noted.



EDUCATION

Pewabic's Education brochures are now available on-line. Adult and youth offerings, classes for all skill and confidence levels, full and half semester, and one-day offerings "to fit your schedule."

Passport to Pottery Summer Camp

Camp starts the week of June 27 and runs for six weeks, ending August 5.



Discover the world, one culture at a time. Students will learn

about the customs, rituals, create art reflective of the people and be able to understand the relation between their own lives and that of the people across the globe. This summer will focus on Africa, The Americas, South America, Asia, Europe and Oceania.

Each week is \$95 per student.

Teen Wheel Throwing Camp

9am-12pm • Monday - Friday

Session 1 • week of August 1st

Session 2 • week of August 8th

Students learn the basics of wheel-throwing techniques and make a finished product.

Each session is \$95 per student

GALLERY EXHIBITIONS

Elizabeth Lurie:

New Works, New Directions

Wearable Ceramics:

Jewelry By International Artists

May 20-July 3

Opening Reception

Friday, May 20 • 6-8pm

35th Annual Staff Student Show

July 15-September 18

Opening Reception

Friday, July 15 • 6-8pm

SPECIAL EVENTS

MAY

Art in Birmingham - Shain Park

May 14-15

Look for the Pewabic booth!

JUNE

"For the House & Garden"

Show & Sale

Ticketed Preview Party

Thursday, June 2 • 6-9pm

Tickets start at \$75

Friday-Sunday — Free & Open

to the Public • 10am-5pm

39th Annual Historic Indian

Village Home & Garden Tour

Saturday, June 4 • 10am-5pm

For information:

tour@historicindianvillage.org

JULY

Art in the Park -

Downtown Plymouth

July 8-10

Visit the Pewabic booth at Art

in the Park in Plymouth. For

additional information go to

www.artinthepark.com.

AUGUST

Annual Summer Sale

FOR MEMBERS ONLY

Saturday, August 20 • 10am-5pm

Up to 50% off on Pewabic giftware

and tile overruns under the tent. No

other discounts apply. To purchase a

membership, please call 313.626.2000

or 313.626.2010.

Family Fun Day

Tuesday, August 23 • 11am-3pm

One time fee of \$5 for five clay make and take projects, many free clay activities.

Demonstrations and tours.

SEPTEMBER

Member Appreciation Month

September 1-30

Pewabic Members get double discounts up to 20% on most gallery purchases.

No other discount coupons apply. To

become a member **call 313.626.2000.**

Arts & Apples Art Fair - Paint

Creek Art Association

Friday-Sunday, September 9-13

Visit us in downtown Rochester. For

additional information go to pccart.org.

OCTOBER

Annual Raku Party

Call for details 313.626.2000

NOVEMBER

Earthy Treasures Holiday Show

Opening Reception:

Thursday, November 10 • 6-8pm

Continues through December 31

For additional information and

hours, please check the website

at www.pewabic.org.

NEW MAIN PHONE NUMBER

313.626.2000

POTTERY CLOSED

Easter, April 24 • Memorial Day,

May 30 • July 3 & 4 • Labor Day, Sept. 5

• Sept. 30 for Inventory • Thanksgiving,

Nov. 24 • Christmas, Dec. 25 •

New Year's Eve & Day, Dec. 31 & Jan 1

Pewabic Pottery is
FREE & Open to the Public
Mon-Sat • 10AM-6PM
Sun • NOON-4PM





PEWABIC POTTERY

10125 East Jefferson Avenue
Detroit, MI 48214

p 313.626.2000

f 313.626.2100

w www.pewabic.org

w www.pewabicstore.org

Return Service Requested

Nonprofit
Organization
U.S. Postage
PAID
Detroit, MI
Permit No. 2169

Generous support
provided by:



THE KRESGE FOUNDATION

Pewabic Pottery is a 501 (c)(3) non-profit organization.

Pewabic Pottery is an equal opportunity employer and provides programs and services without regard to race, color, religion, national origins, age, or sex.

 **PEWABIC POTTERY NEWS**

SPRING/SUMMER 2011

OPENING RECEPTION for both exhibitions:
Friday, May 20th, 6 - 8 p.m.



WEARABLE CERAMICS
Jewelry from International Artists

THESE ARTISTS, some of the finest established and emerging makers from six countries transform clay and other non-traditional materials into jewelry that also reflects advanced ideas of contemporary design for body ornament. The exhibition was organized by Tara Robinson, Curator of Contemporary Ceramics, Pewabic Pottery & Linda Ross Contemporary: Art + Projects.

PARTICIPATING ARTISTS:

- | | |
|--------------------|--------------------|
| Sebastian Buescher | Peter Hoogeboom |
| Pilar Cotter Nunez | Jet Mous |
| Rian de Jong | Evert NijlandKarin |
| Iris Eichenberg | Seufert |
| David Elliott | Andrea Wagner |
| Ford & Forlano | Gaby Wandscher |
| Caroline Gore | Pauline Wiertz |
| Maria Hees | Shu-lin Wu |



ELIZABETH LURIE
New Work, New Directions

LURIE has made new figurative works on the occasion of this exhibition which have become a series: *Woman in a Garden*, that expresses the wonder and inspiration that Lurie finds in nature. Her previous work, concentrated on functional vessels, has nevertheless been concerned with the sculptural elements: form, mass, surface, line, and color. "Beauty with its power to restore the human spirit is my ultimate goal."



PEWABIC BOARD OF TRUSTEES

Officers

Mary Wisgerhof
Board Chair

Anmmarie Erickson
Vice President

Joseph Vassallo
Treasurer

Carole Harris
Secretary

Executive Director

Terese Ireland

Advisory Council

- Kim Ross Clayson
- Anne Crane
- Eugene Gargaro
- Barbara Kratchman
- Tim Mast
- Dr. John Roberts
- Linda Ross
- Janis Wetsman
- Marilyn Wheaton

Trustees

- Edith Briskin
- Neil G. Bristol Jr.
- Kenneth Crutcher
- Frank Dulin
- Roger Garrett
- Urban Jupena
- Harry Kurrie
- Leslie Lister
- Carey Ford Mammen
- Patrice Merritt
- Tara Robinson
- Corey Scillian
- Sharon Snodgrass
- Clifford Snyder
- Susanne Stephenson
- Davira Taragin

May 20 - July 4, 2011